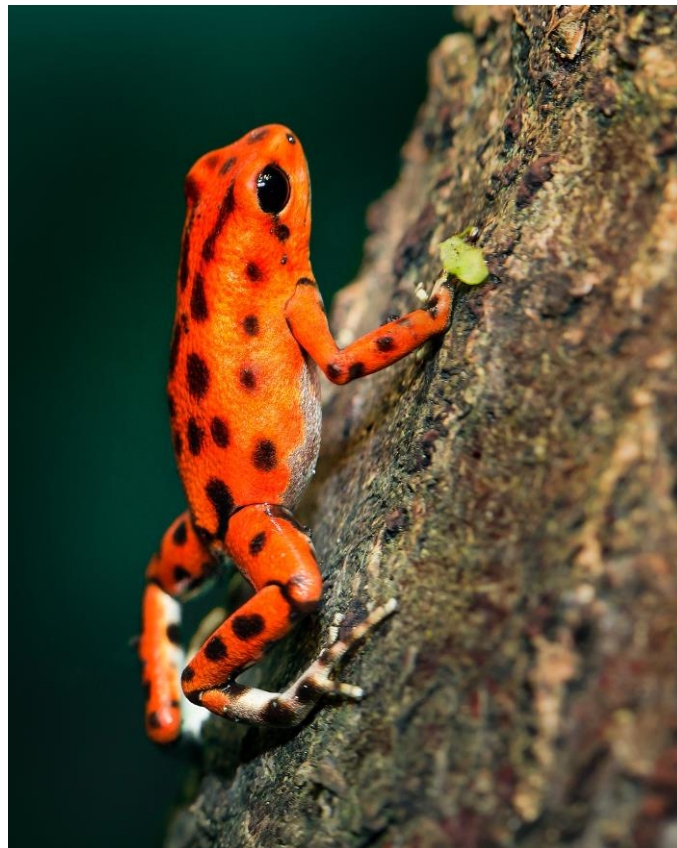




Service Description

Infosec Management



“Poison frogs have co-evolved a primary defense of aposematic coloration and a secondary of toxicity. They present themselves as unprofitable to predators.”

Prey Behavior

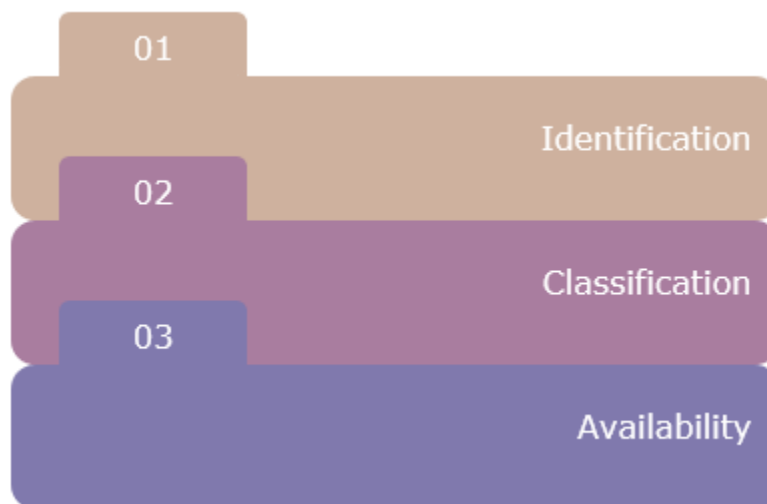
Charlotte Badger

www.charlottebadger.com



This assessment analyzes how an organization identifies and classifies its information assets and associated availability. The results identify the organization's risk behavior relative to its prioritization of sensitive and critical information assets.

The assessment can be integrated with our predator-prey platform and the resultant dashboard succinctly identifies an organization's high-risk behavior. Platform outputs can be used to influence and inform Enterprise Risk Management, Budget and Strategy.



Deep Analytics

We use artificial intelligence and a variety of analytics to assess an organization's approach to information identification, classification and availability - to identify high risk behavior.

Charlotte Badger

www.charlottebadger.com



Identification

How do you keep track of ever changing information asset values and lifecycles? Is there an authority to assign ownership? How do information assets and rights extend to third parties? These are just some of the questions our analytics answer.



Classification

Is the classification model extensible across all information types? Is there prioritization with budget apportionment? Compliance with regulatory frameworks? Are business partners classification aware? Our analytics answer these questions and more to identify high risk behavior.

Charlotte Badger

www.charlottebadger.com



Availability

Have you identified if the business can operate with full or partial loss of an information asset? Are business partners integrated in your planning? Is your approach standards compliant? Do you undertake regular testing? Do you have to pre-plan or run mini-projects prior to testing? Just some of the questions we answer in identifying high risk approaches.





The assessment is available in standard or advanced with results made available in 14 and 28 days respectively. Standard provides a snapshot with associated heat maps and analytics and advanced includes behavioral recommendations. All of which are designed to address the question of information asset handling behavior.

Infosec Management

Identifying an organization's high-risk behavior in its information asset handling is a key element to understanding risk.

Features	Standard	Advanced
Identification	✓	✓
Classification	✓	✓
Availability	✓	✓
Behavioral Analytics	✓	✓
Behavioral Recommendations	X	✓

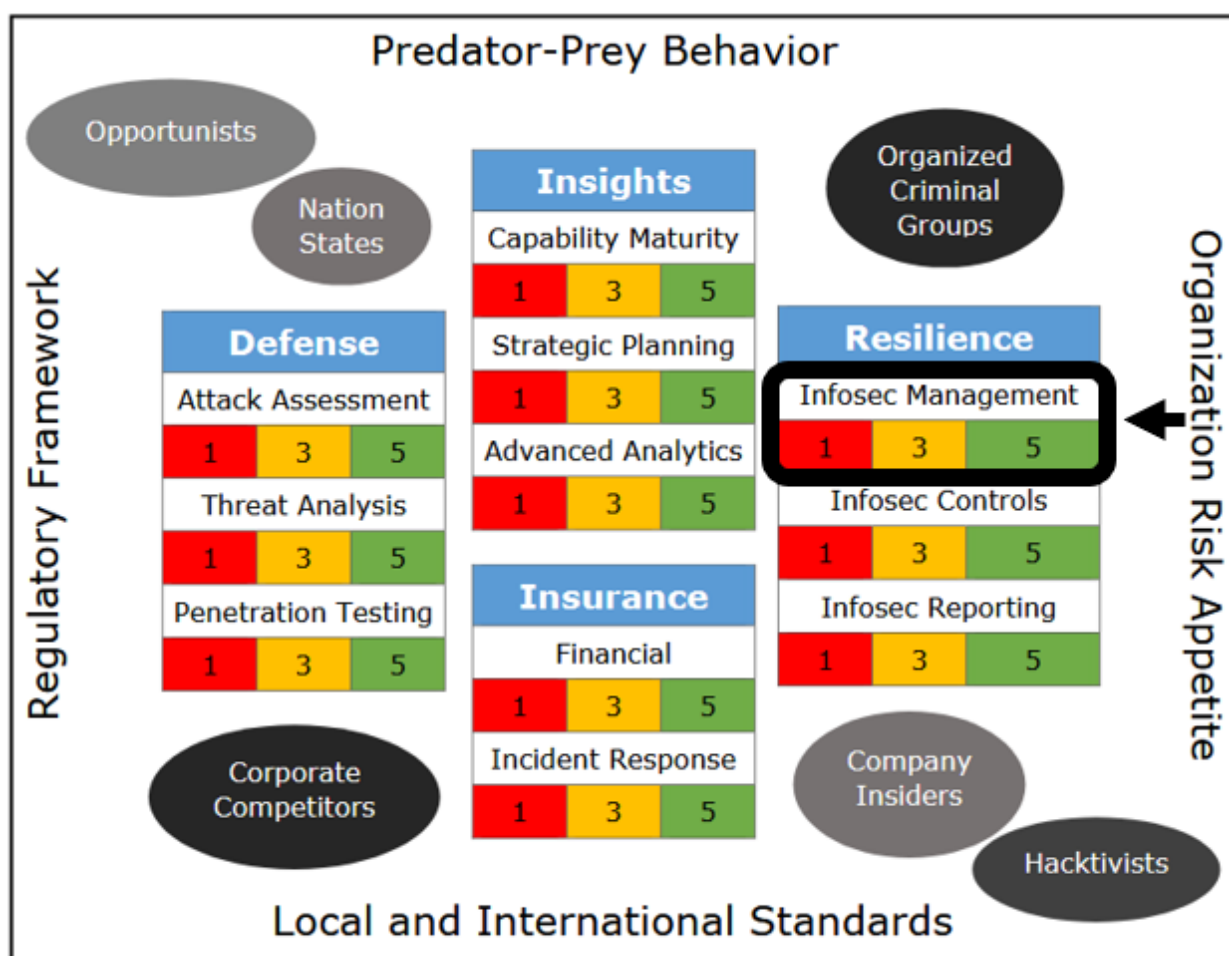
Each assessment includes a summary rating within the scale of 1 to 5 and a red-amber-green dashboard display.

Resilience		
Infosec Management		
1	3	5



Predator-Prey Platform

The resultant summary rating can be used within the predator-prey platform to influence and inform Enterprise Risk Management, Budget and Strategy.



© www.charlottebadger.com